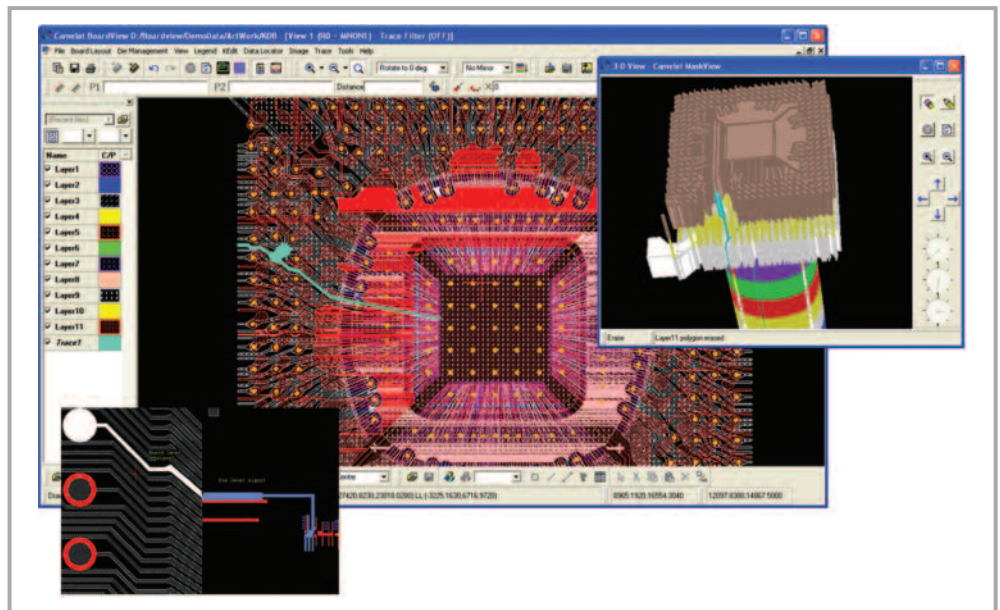


SystemNav™

- First commercially available software solution for failure analysis that integrates board-level and die-level layout data and provides CAD navigation at both die and board level.
- Easy-to-use, interactive, rich visualization tools for fault isolation.
- Speeds fault localization to enable quicker time to repair.
- Empowers engineers to trace failure from device to board and vice versa.
- Improves equipment utilization.
- Provides feedback to board and circuit designers to improve design for manufacturability.

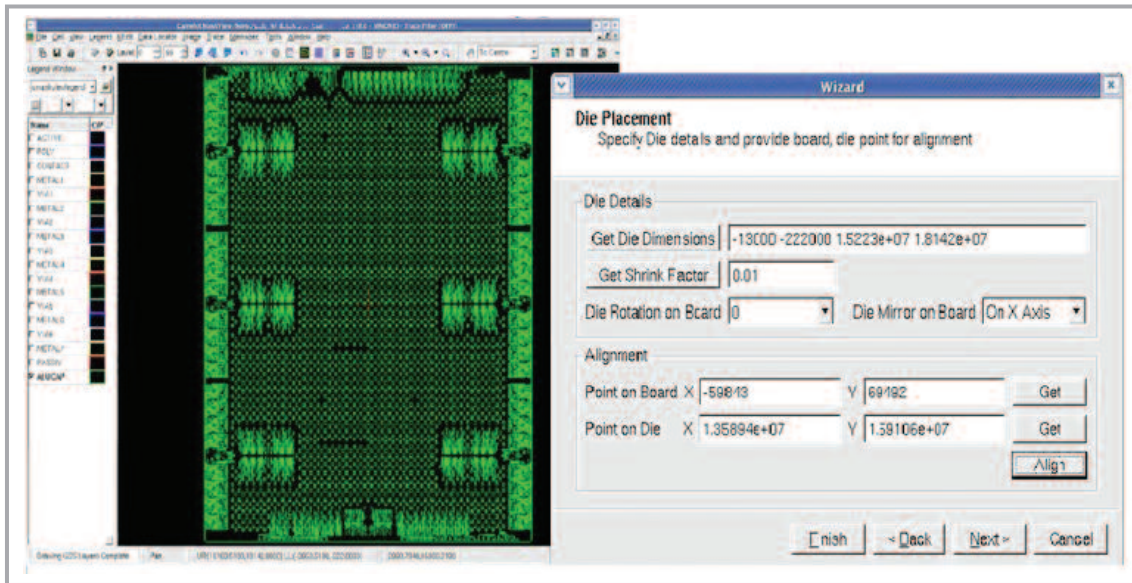
SystemNav is a layout visualizing and signal tracing CAD navigation software solution for printed circuit board (PCB), multi-chip module (MCM) and stacked die applications. It extends Magma's Camelot™ die-level failure analysis capabilities to the packaging industry. SystemNav is the only commercially available tool able to integrate multiple, interactive IC and PCB circuit debugging and online tracing with CAD navigation capabilities. SystemNav allows rapid signal traces on dies, stacked dies, MCMs and PCBs. Fab teams can now trace a signal from chip to board, back to chip and then quickly navigate failure analysis tools to X,Y locations to determine the root cause of the fault.



Features:

- SystemNav displays board-level layout data while Camelot's MaskView™ displays chip- or die-level layout data.
- SystemNav and MaskView allow interactive tracing or highlighting of the layout and electrical connectivity.
- SystemNav and MaskView have similar GUIs, easing adoption.
- SystemNav provides many of Camelot's board-level failure analysis capabilities, including 2D and 3D cross sectioning.

SystemNav™



SystemNav supports and guides placement of single and multiple die data.

Flexibility:

- Supports industry-standard file formats including OASIS, Virtuoso, Gerber, GDSII and AutoCAD Drawing Exchange Format (DXF).
- Adapts to many applications.
- Can be added as an option to Camelot.

How It's Used:

- Launch SystemNav using the board-level layout data.
- Place individual or multiple die data into the proper position on the board. The GUI will guide the placement.
- To trace, select the board-level signal from SystemNav or die-level signal from MaskView.
- Use same method to direct equipment drivers as with MaskView.

SOFTWARE AND HARDWARE REQUIREMENTS:

SystemNav has the same software and hardware requirements as Camelot. It supports Windows, Linux and Solaris platforms:

Windows:

- Operating system: Windows 2000/XP
- Single/multi CPU system
- 2 GB system memory
- 100 MB of free disk space for installation

Linux:

- Operating system: Linux 32-bit with Kernel 2.6
- Single/multi CPU system
- 2 GB system memory
- 100 MB of free disk space for installation

Solaris:

- Operating system: Solaris 7 (Sun SPARC)
- Single/dual CPU system
- 2 GB system memory
- 100 MB of free disk space for installation



1650 Technology Drive, San Jose, CA 95110 USA | Tel: 408-565-7500 | Fax: 408-565-7501 | www.magma-da.com